

## OB20 – Large Rigid (with expand)

**ARENA**

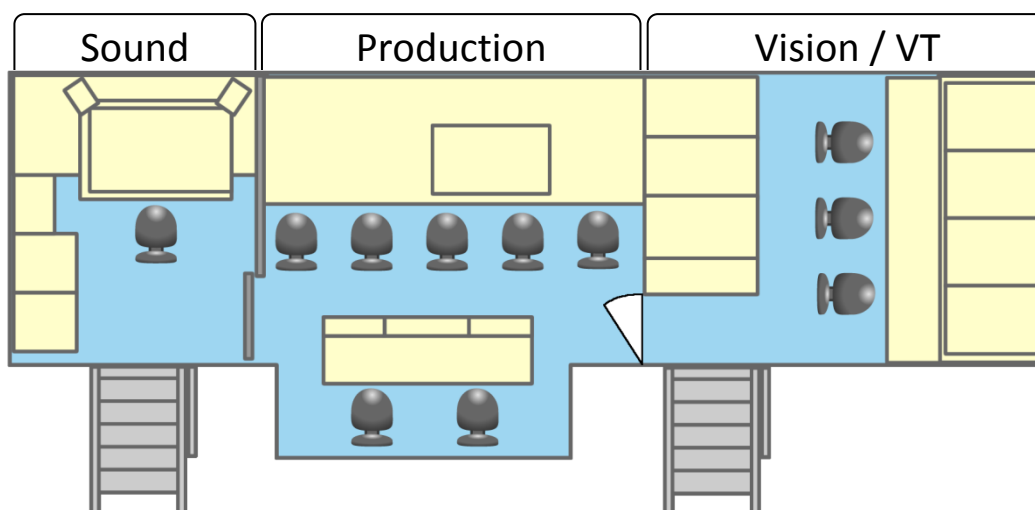
### Unit Summary

OB20 is a unique and powerful truck designed to provide optimum internal space and yet cope with venues where access and/or parking are restricted. This is the first HD truck in the market to be able to operate fully with its expanding side in or out.

- With the expanding side out the Production area offers two spacious rows of seating. The front row seats up to 5 people and the second row a further 2 people all with room to spare.
- However with the expanding side in, the truck is still fully operational but simply without the second row of Production seating being available.

The truck features the latest in HD facilities including a Sony 3 ME MVS8000G vision mixer, a Calrec Omega 5.1 capable audio mixer and extensive LCD monitoring throughout. The truck is designed to support 12 camera channels (fibre and/or triax) and 12 VT machines (tape and EVS). Vision routing is fully HD and there is a final down-conversion to SD & PAL as required.

### Layout Drawing



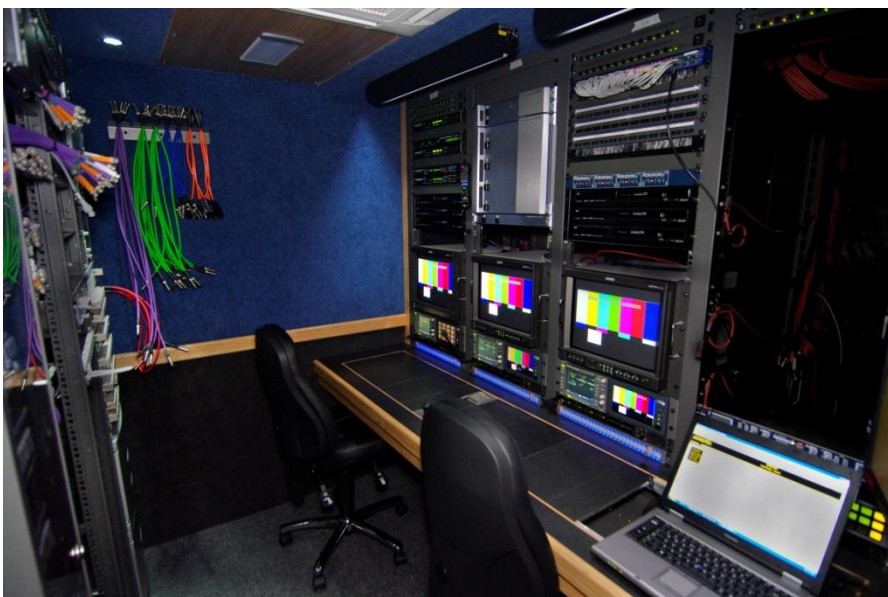
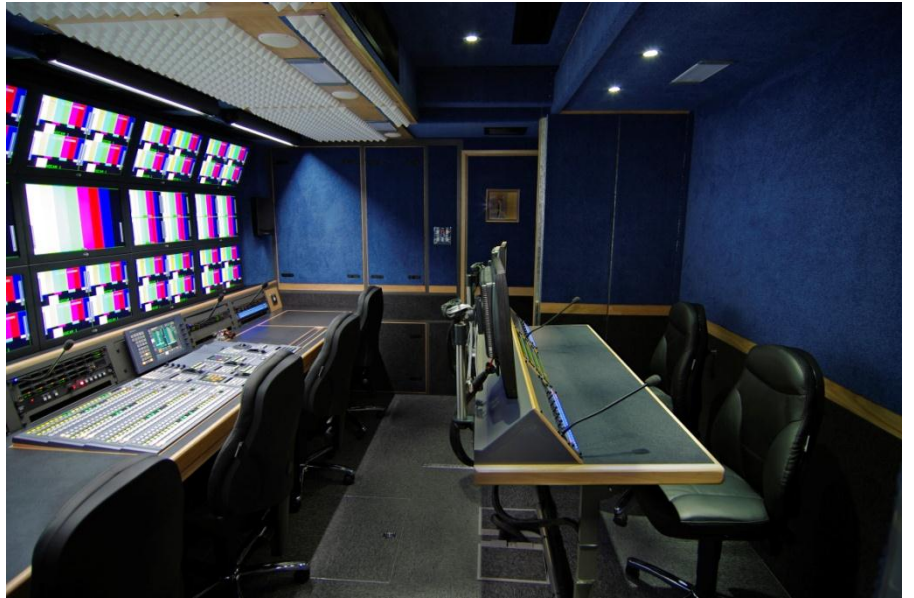
### Technical Specifications

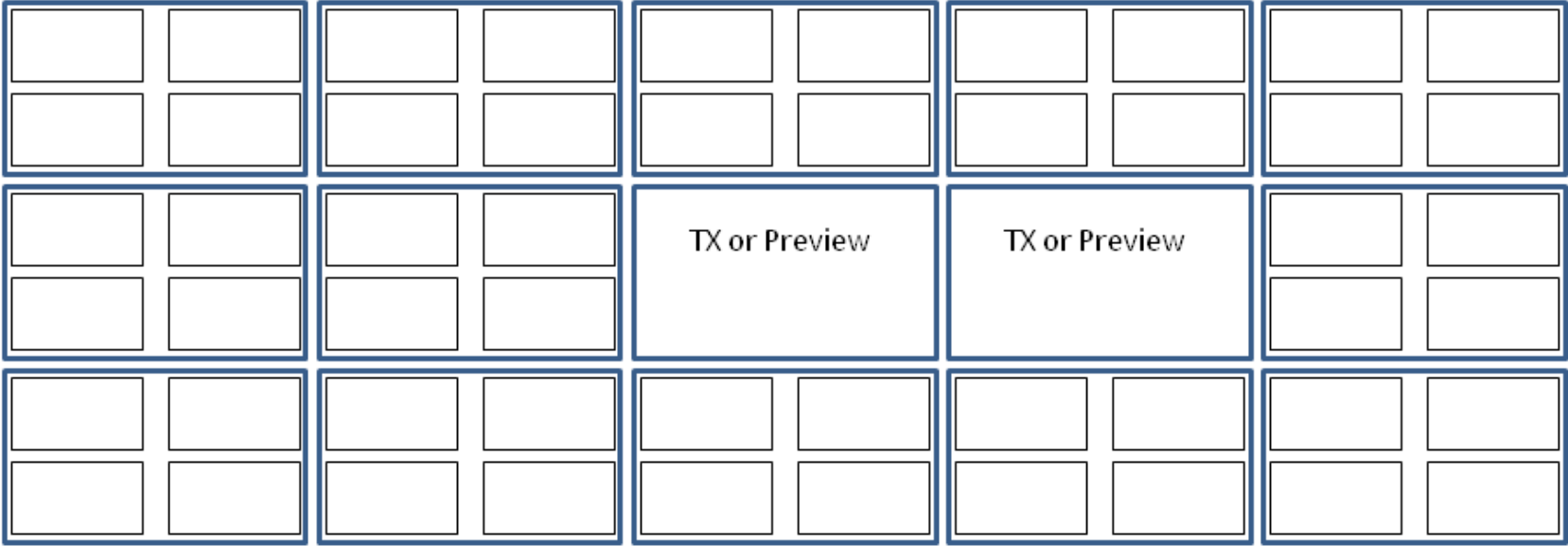
Sound	Production	Vision / VT
Calrec Omega console 80 analogue inputs Multi-track outputs 56 faders on the top surface Madi interface Dolby 5.1 Surround processing PMC surround monitoring Lexicon PCM91 Axon glue Riedel digital talkback 3x Duplex radio talkback channels Spot-On grams system	12x Sony HD camera channels Evertz glue Probel matrix – 192x224 HD/SD Sony MVS8000G vision mixer 3 ME's 2 Channels of DVE	12x HDCam VTR's 3x 6 Channel EVS's

<b>Chassis:</b>	11.2m long rigid vehicle with single partial expanding side (can operate with side in or out).
<b>Weight:</b>	Details to be announced
<b>Power requirements:</b>	1 x 125amp single phase c-form









Sony MVS 8000  
3 ME's